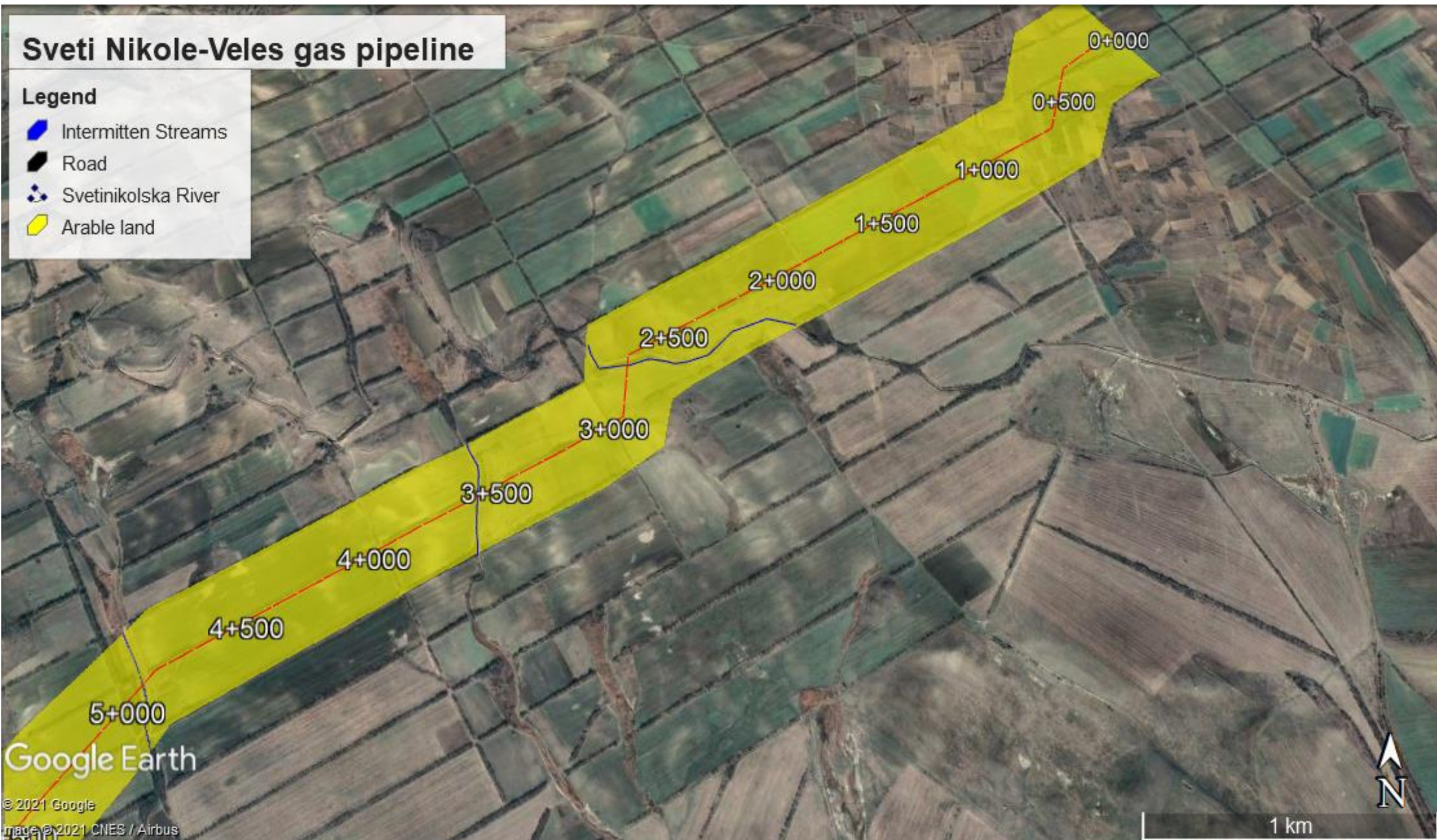
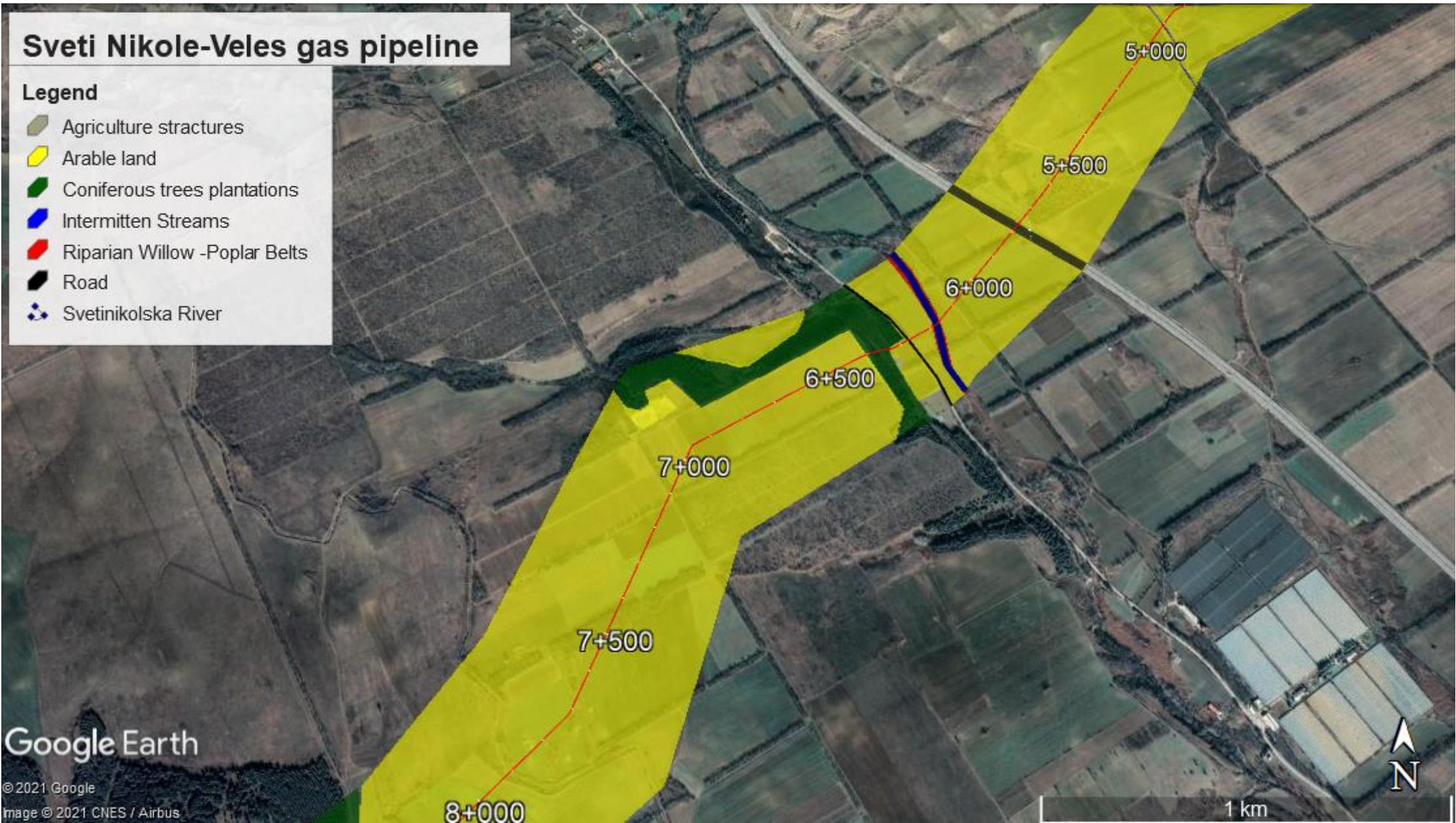


Прилог 2. Мапи на живеалишта



Sveti Nikole-Veles gas pipeline

- Legend**
- Agriculture structures
 - Arable land
 - Coniferous trees plantations
 - Intermittent Streams
 - Riparian Willow -Poplar Belts
 - Road
 - Svetinikolska River

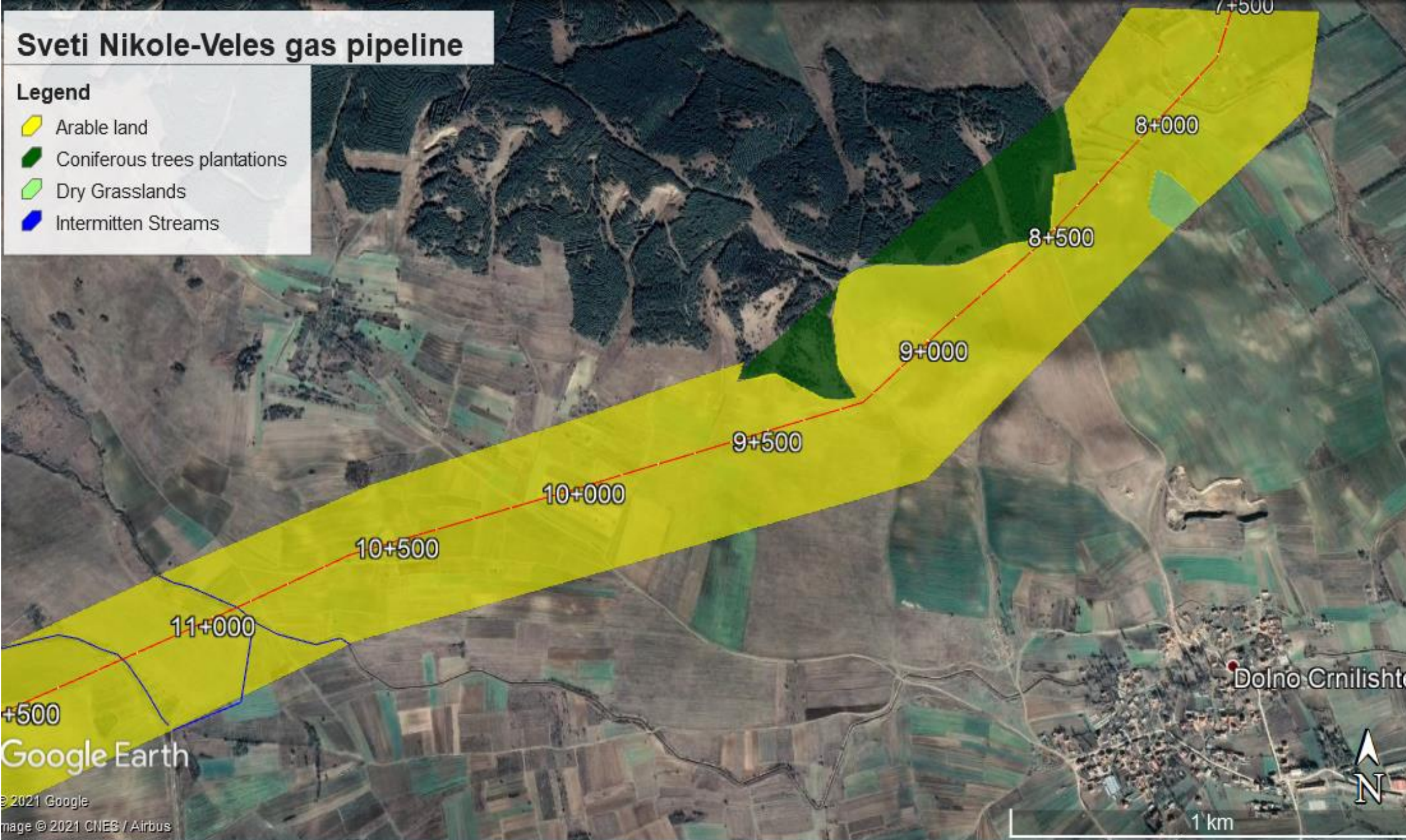


Google Earth

© 2021 Google
Image © 2021 CNES / Airbus

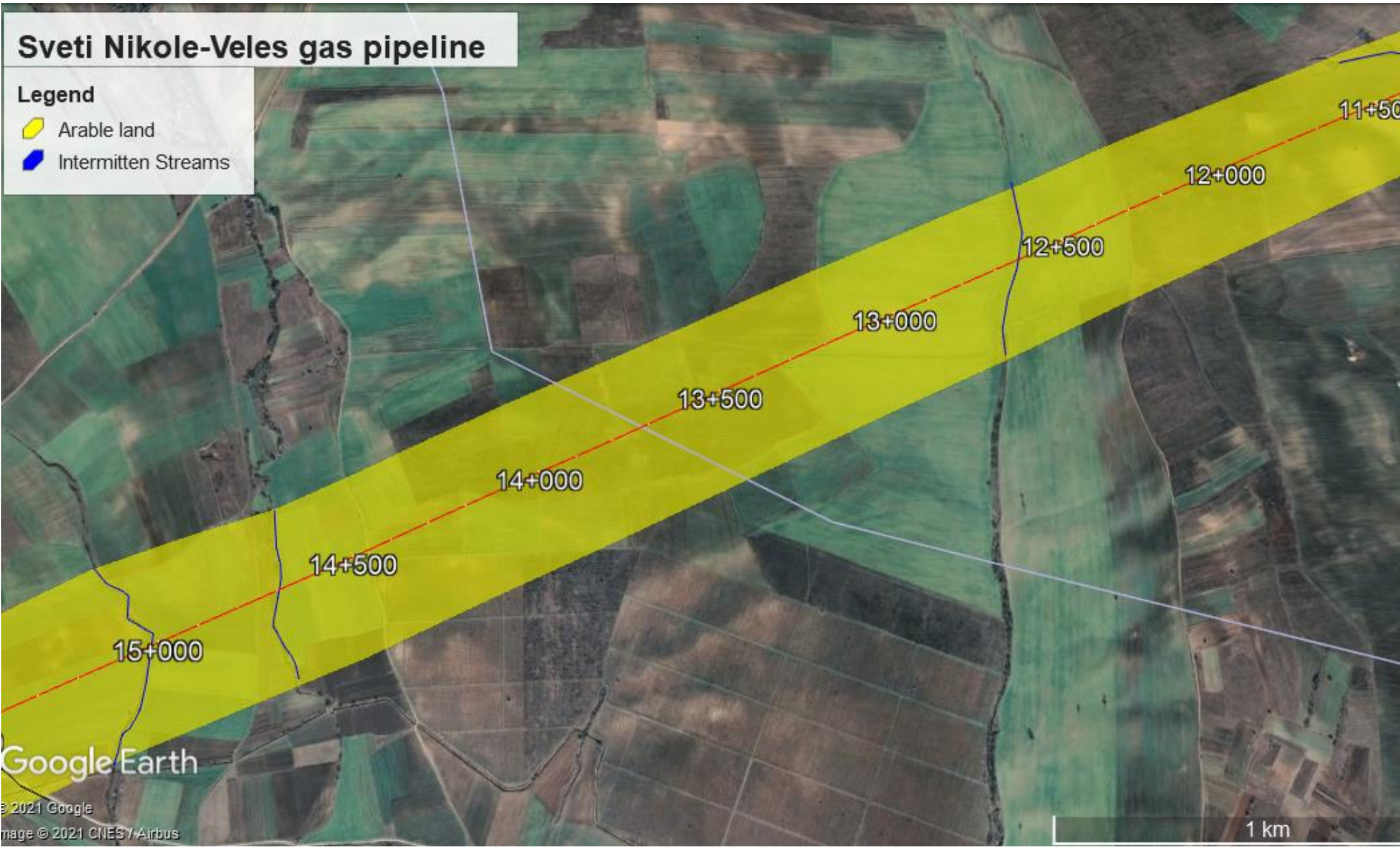
Sveti Nikole-Veles gas pipeline

- Legend**
- Arable land
 - Coniferous trees plantations
 - Dry Grasslands
 - Intermittent Streams



Sveti Nikole-Veles gas pipeline

- Legend**
- Arable land
 - Intermittent Streams







Google Earth

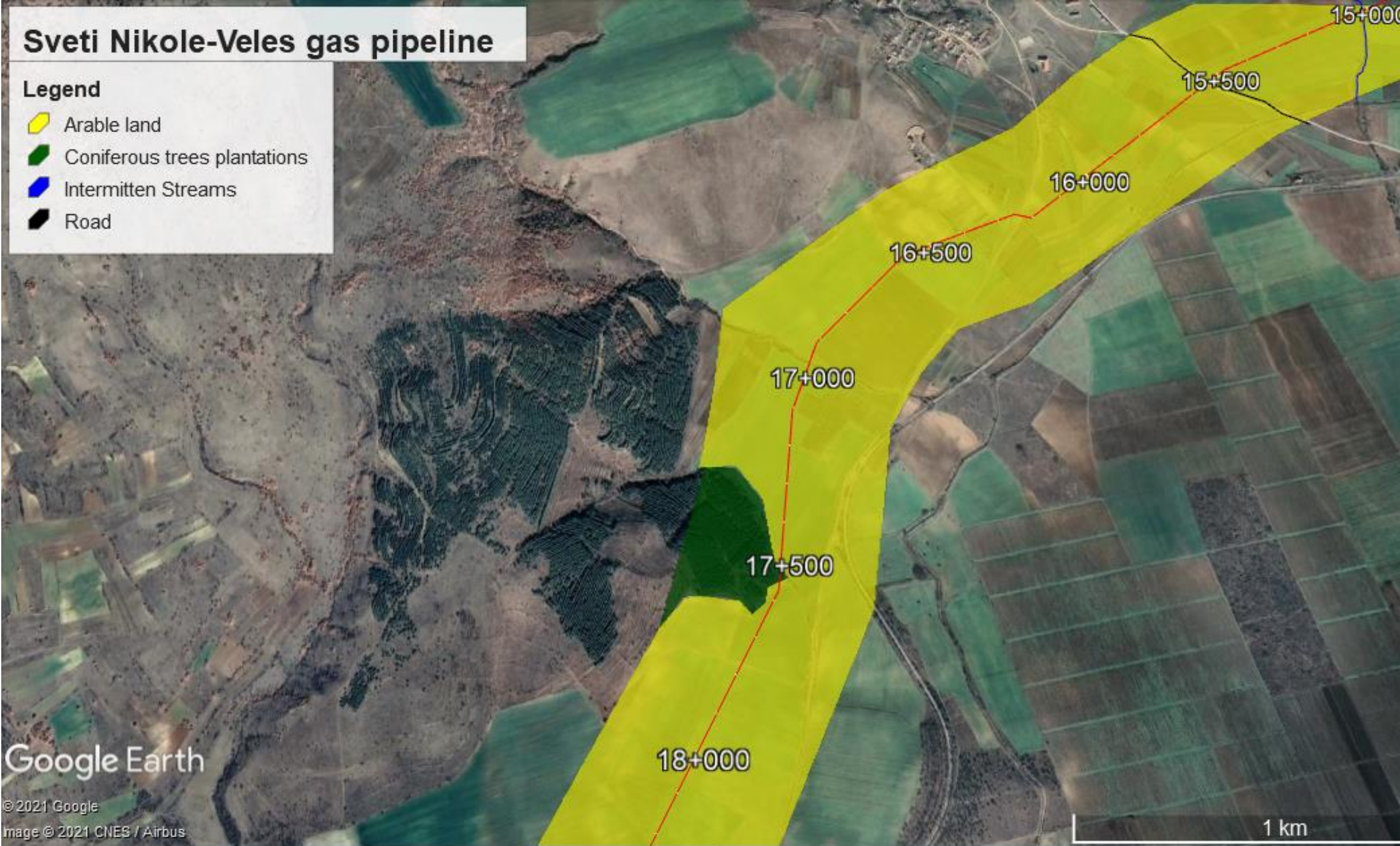
© 2021 Google
Image © 2021 CNES / Airbus

1 km

Sveti Nikole-Veles gas pipeline

Legend

-  Arable land
-  Coniferous trees plantations
-  Intermitten Streams
-  Road



Google Earth

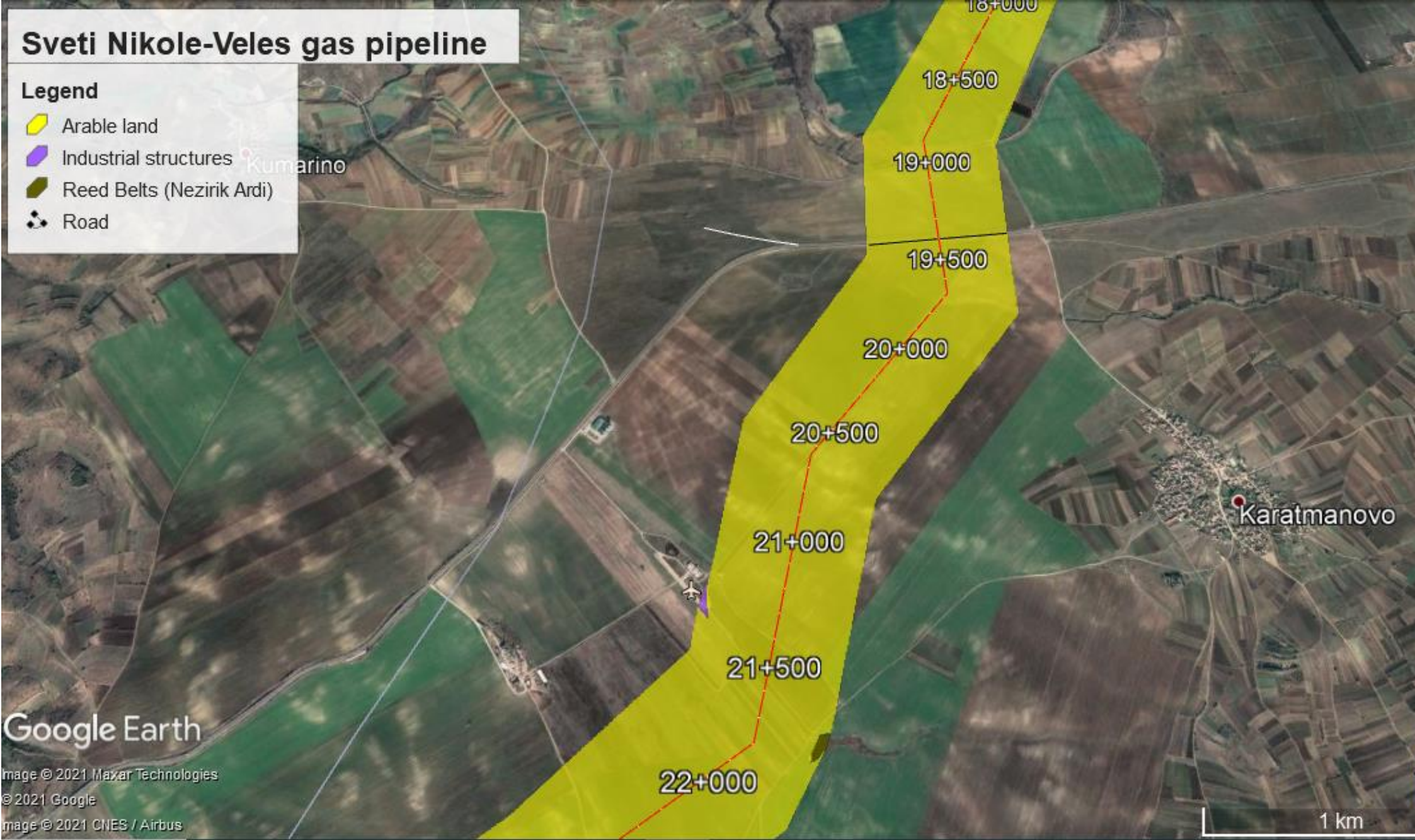
© 2021 Google
Image © 2021 CNES / Airbus

1 km

Sveti Nikole-Veles gas pipeline

Legend

- Arable land
- Industrial structures
- Reed Belts (Nezirik Ardi)
- Road



Google Earth
Image © 2021 Maxar Technologies
© 2021 Google
Image © 2021 CNES / Airbus

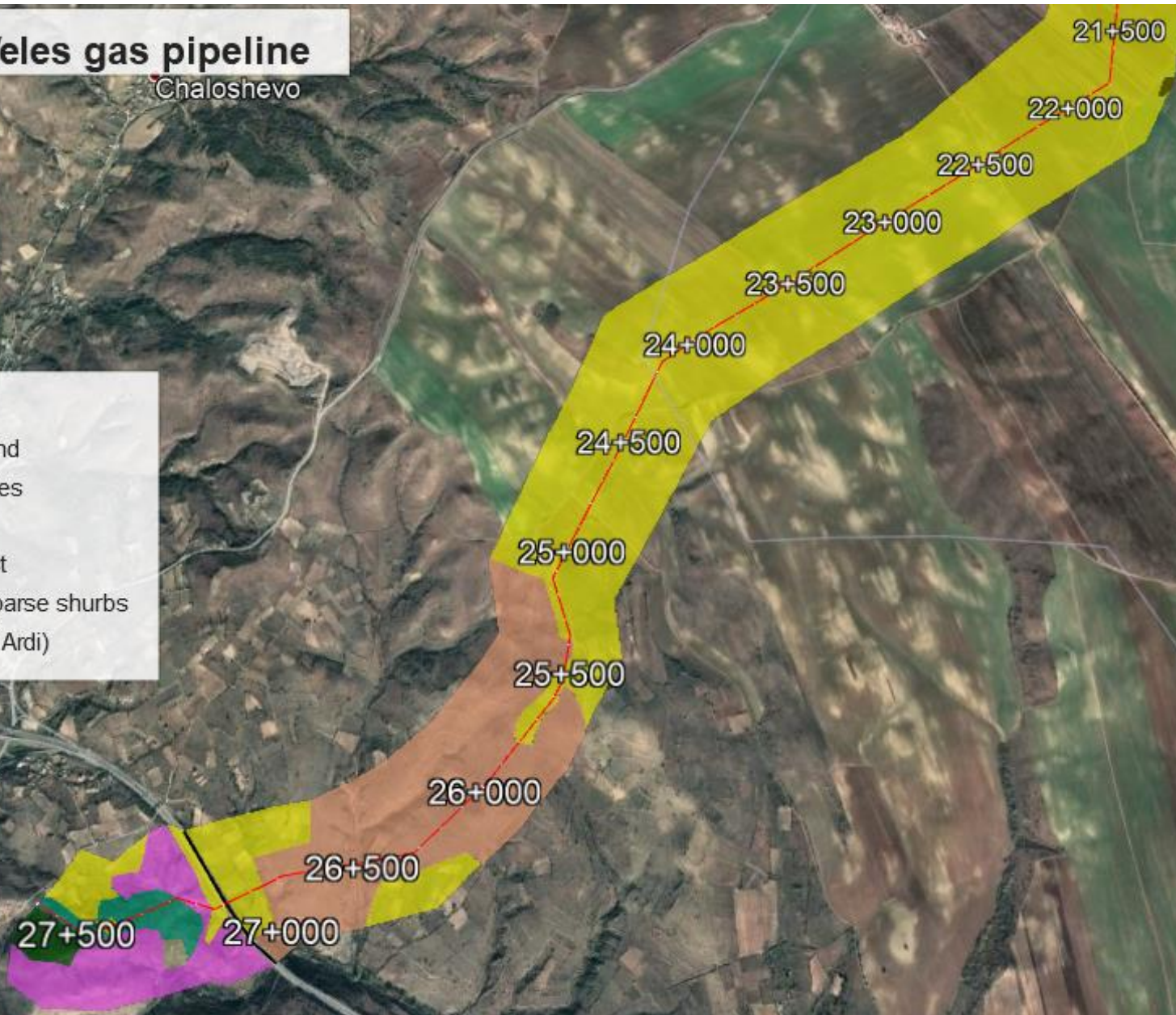
1 km

Sveti Nikole-Veles gas pipeline

Chaloshevo

Legend

- Abandoned arble land
- Agricultural stractures
- Arable land
- Degraded oak forest
- Hill pastures with sparse shurbs
- Reed Belts (Nezirik Ardi)



Google Earth
© 2021 Google
Image © 2021 Maxar Technologies

1 km
N